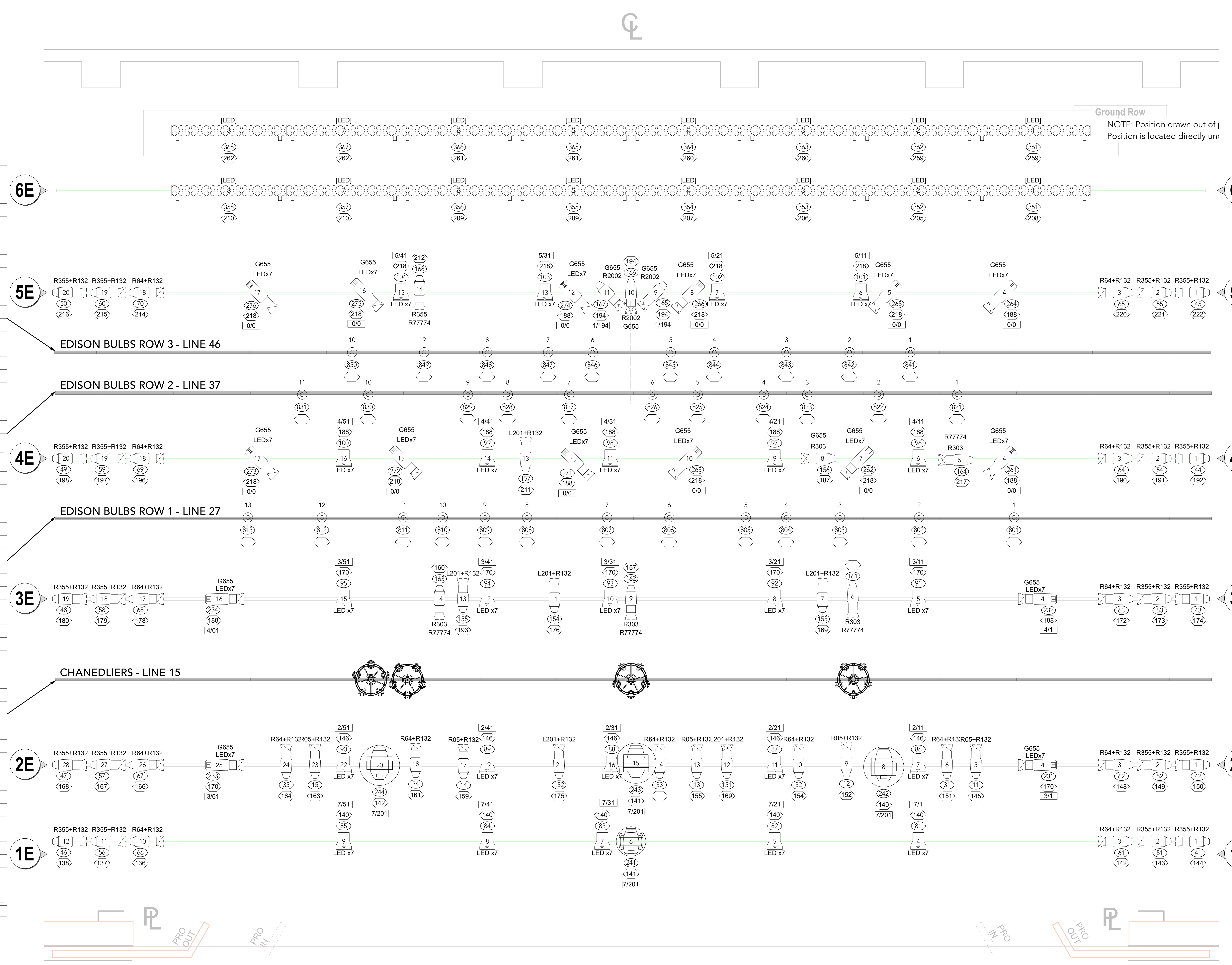


58	39'-6"	BOUNCE	27'-0"	58
57	38'-10"	--	TRIM	57
56	38'-2"	#6 ELECTRIC	29'-0"	56
55	37'-6"	NO ARBOR	--	55
54	36'-10"	CYC	27'-0"	54
53	36'-2"	ARCH	27'-0"	53
52	35'-6"	UPSTAGE TRAVELER	27'-0"	52
51	34'-10"	#5 LEGS	27'-0"	51
50	34'-2"	#5 BORDER	29'-10"	50
49	33'-6"	NO ARBOR	--	49
48	32'-10"	#5 ELECTRIC	TRIM	48
47	32'-2"	--	TRIM	47
46	31'-6"	#3 EDISON BULBS	TRIM	46
45	30'-10"	NO ARBOR	--	45
44	30'-2"	NO ARBOR	--	44
43	29'-6"	--	TRIM	43
42	28'-10"	FALLING PAGES (?)	TRIM	42
41	28'-2"	#4 LEGS	27'-0"	41
40	27'-6"	#4 BORDER	29'-10"	40
39	26'-10"	--	TRIM	39
38	26'-2"	NO ARBOR	--	38
37	25'-6"	#2 EDISON BULBS	TRIM	37
36	24'-10"	US MON. SPEAKERS	TRIM	36
35	24'-2"	#4 ELECTRIC	TRIM	35
34	23'-6"	--	TRIM	34
33	22'-10"	NO ARBOR	--	33
32	22'-2"	--	TRIM	32
31	21'-6"	MIDSTAGE TRAVELER	27'-0"	31
30	20'-10"	#3 LEGS	27'-0"	30
29	20'-2"	#3 BORDER	29'-10"	29
28	19'-6"	--	TRIM	28
27	18'-10"	#1 EDISON BULBS	TRIM	27
26	18'-2"	NO ARBOR	--	26
25	17'-6"	--	TRIM	25
24	16'-10"	#3 ELECTRIC	TRIM	24
23	16'-2"	--	TRIM	23
22	15'-6"	--	TRIM	22
21	14'-10"	GRANNY WINDOW	TRIM	21
20	14'-2"	NO ARBOR	--	20
19	13'-6"	FLYING BIRDS	TRIM	19
18	12'-10"	#2 LEGS	27'-0"	18
17	12'-2"	#2 BORDER	29'-10"	17
16	11'-6"	--	TRIM	16
15	10'-10"	CHANDELIERS	TRIM	15
14	9'-6"	MONITOR SPEAKERS	TRIM	14
13	8'-10"	--	TRIM	13
12	8'-2"	#2 ELECTRIC	TRIM	12
11	7'-6"	--	TRIM	11
10	6'-10"	#1 BORDER	29'-10"	10
9	6'-2"	#1 LEGS	27'-0"	9
8	5'-6"	NO ARBOR	--	8
7	4'-10"	--	TRIM	7
6	4'-2"	#1 ELECTRIC	TRIM	6
5	3'-6"	--	TRIM	5
4	2'-10"	--	TRIM	4
3	2'-2"	HOUSE CURTAIN	27'-0"	3
2	1'-6"	--	TRIM	2
1	0'-10"	VALANCE	29'-10"	1
	0'-3"	FIRE CURTAIN	--	1



Key to Instrumentation

- ETC Source 4 - 10" @ 750w
- ETC Source 4 - 14" @ 750w
- ETC Source 4 - 19" @ 750w
- ETC Source 4 - 26" @ 750w
- ETC Source 4 - 36" @ 750w
- ETC Source 4 - 50" @ 750w
- ETC Source 4 - 90" @ 750w
- ETC ColorSource Deep Blue 36" 147w
- ETC ColorSource Deep Blue 50" 147w
- ETC Source 4 LED2 Lustr 26" 171w
- ETC Source 4 LED2 Lustr 36" 171w
- ETC Desire D60 LED 181w
- COLORado 2 Quad Zoom 201w (Chauvet)
- Blizzard Motif Metro 600w
- Elation Smarty Hybrid
- ROBE Robin MMX 1000w
- Strand SL660 - LED Cyc Strip
- PRACTICAL Chandelier
- PRACTICAL Blivusell Tiffany Style Stained Glass Orange Mushroom Lamp
- PRACTICAL Glass Pumpkin Light
- PRACTICAL Green Desk Lamp
- PRACTICAL LightTheBox Retro Rustic Wall Scones
- PRACTICAL Hanging Edison Light Bulb
- PRACTICAL Firefly Magic - Twinkling Firefly Lights

Typical Notation

- Barndoor
- Top Hat
- Gobo
- Color
- Template/iris
- Unit Number
- 750 watt Designation
- Channel Number
- Dimmer Number
- Universe/Address Number
- Circuit Number

Into the Woods
 Music and Lyrics by Stephen Sondheim
 Book by James Lapine
 Original Director on Broadway by James Lapine
 Choreography by Matthew Wain

UVU School of THE ARTS
 UTAH VALLEY UNIVERSITY

LIGHTING BY:
RYAN FALLIS DESIGN

INTO THE WOODS
 SCOTT & KAREN SMITH CENTER
 THE NOORDA CENTER FOR PERFORMING ARTS, UTAH VALLEY UNIVERSITY

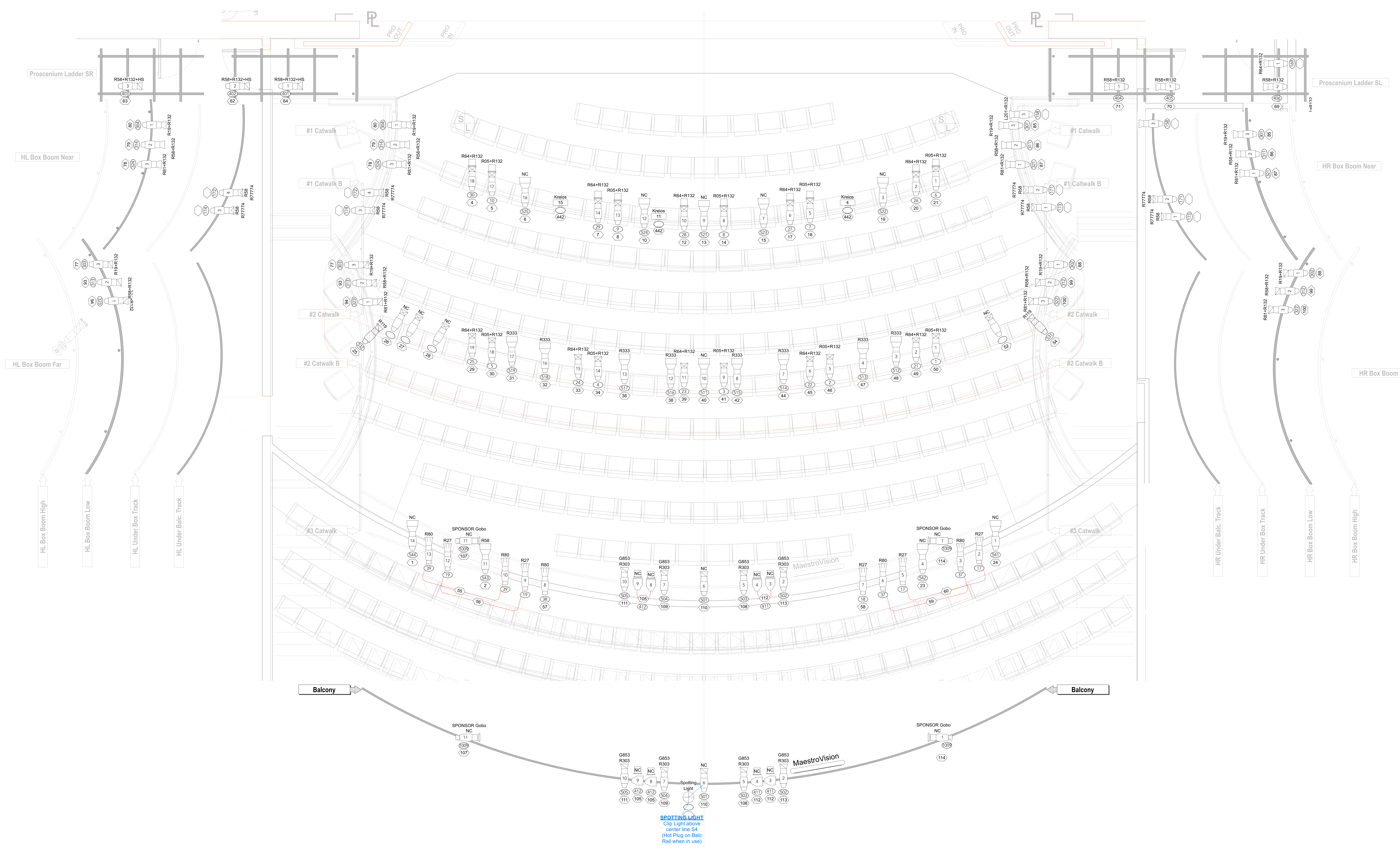
DIRECTED BY: JENNIFER DELAC
 LIGHTING DESIGNER: RYAN FALLIS
 ASST. LIGHTING: KARA MACCARTHY

SCALE: 1/2" = 1'-0" DATE: FEB. 23, 2024

SIZE: 36" x 48"

PLATE # 1 OF 3

STAGE PLOT



Key to Instrumentation

- ETC Source 4 - 10° @ 750w
- ETC Source 4 - 14° @ 750w
- ETC Source 4 - 19° @ 750w
- ETC Source 4 - 26° @ 750w
- ETC Source 4 - 36° @ 750w
- ETC Source 4 - 50° @ 750w
- ETC Source 4 - 90° @ 750w
- ETC ColorSource Deep Blue 36° 147w
- ETC ColorSource Deep Blue 50° 147w
- ETC Source 4 LED2 Lustr 26° 171w
- ETC Source 4 LED2 Lustr 36° 171w
- ETC Desire D60 LED 181w
- COLORado 2 Quad Zoom 201w (Chauvet)
- Blizzard Motif Metro 600w
- Elation Smarty Hybrid
- ROBE Robin MMX 1000w
- Strand SL660 - LED Cyc Strip
- PRACTICAL Chandelier
- PRACTICAL BiVusall Tiffany Style Stained Glass Orange Mushroom Lamp
- PRACTICAL Glass Pumpkin Light
- PRACTICAL Green Desk Lamp
- PRACTICAL LightTheBox Retro Rustic Wall Scones
- PRACTICAL Hanging Edison Light Bulb
- PRACTICAL Firefly Magic - Twinkling Firefly Lights

Typical Notation

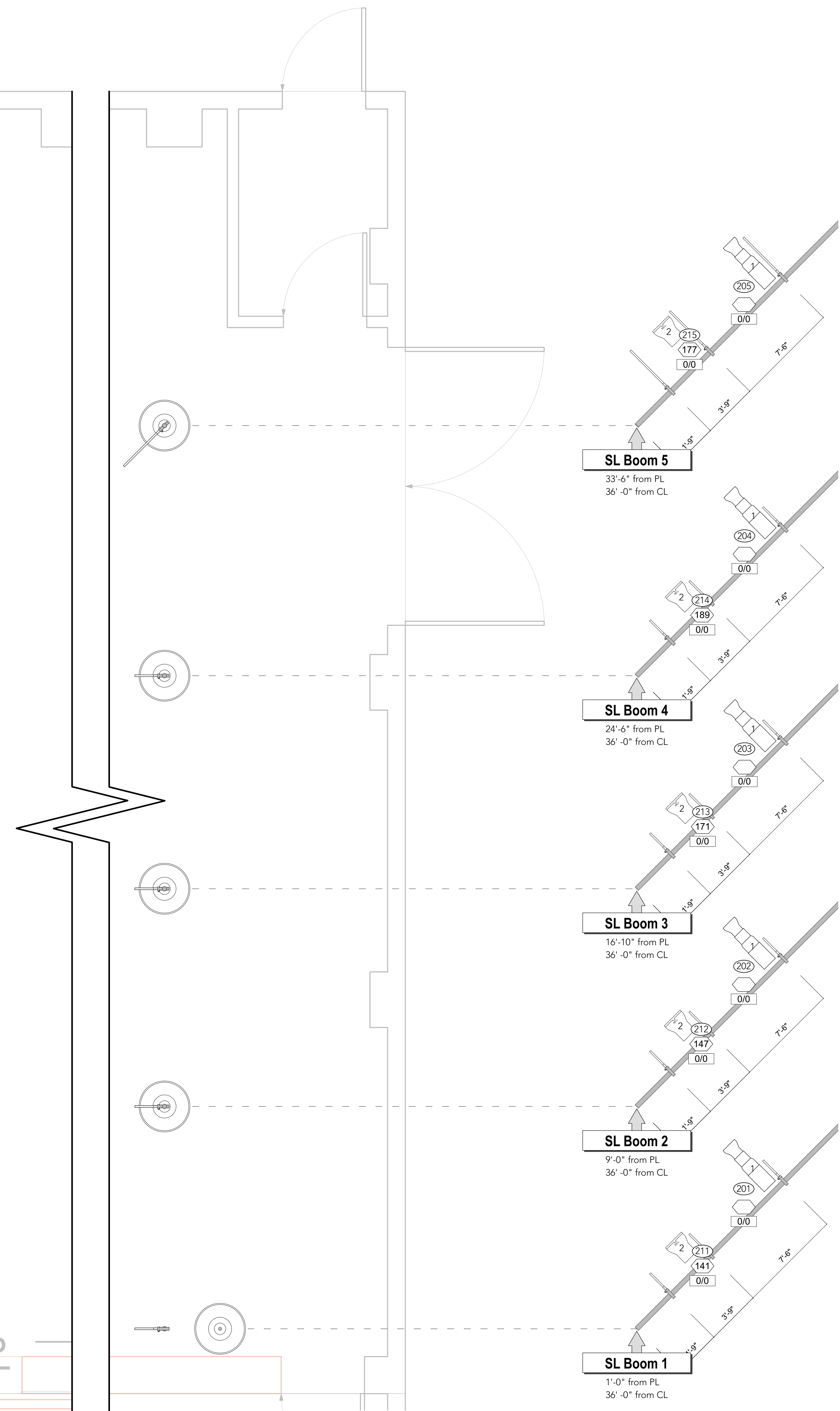
- Barddoor
- Top Hat
- Gobo Color
- Template/Or Iris
- Unit Number
- 750 watt Designation
- Channel Number
- Dimmer Number
- Universe/Address Number
- Circuit Number

Into the Woods
 Music and Lyrics by Stephen Sondheim
 Book by James Lapine
 Original Story by Perrine LeClerc
 Adapted for the Stage by James Lapine
 Directed by James Lapine

UVU School of THE ARTS
 UTAH VALLEY UNIVERSITY

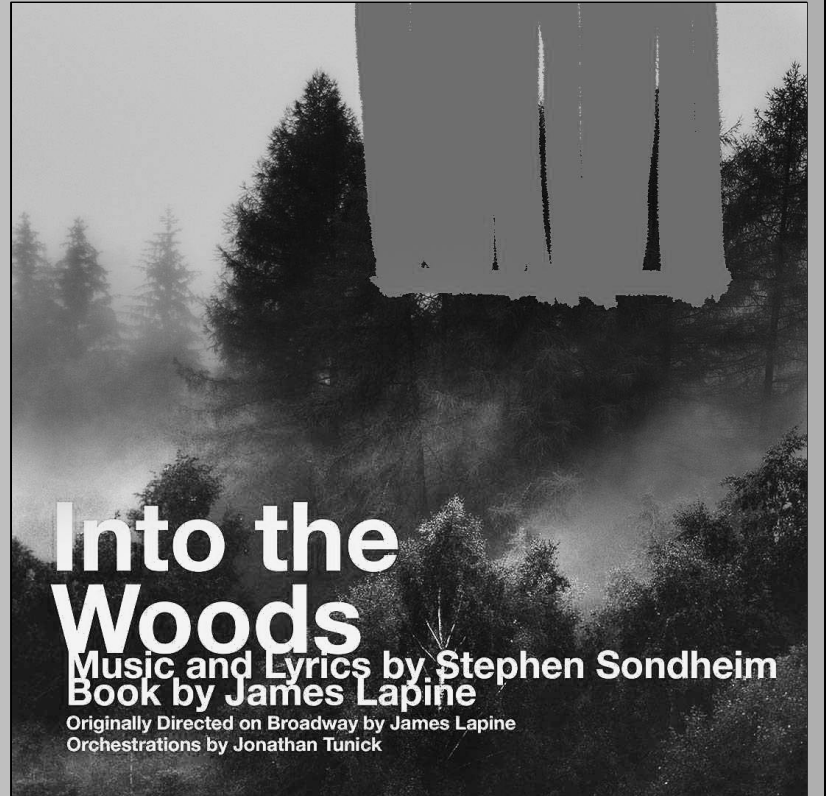
LIGHTING BY:
RYAN FALLIS
 PRESENTS

INTO THE WOODS
 SCOTT & KAREN SMITH CENTER
 THE NOORDA CENTER FOR PERFORMING ARTS, UTAH VALLEY UNIVERSITY
 DIRECTED BY: JENNIFER DELAC PLATE #
 LIGHTING DESIGNER: RYAN FALLIS
 ASSIST. LIGHTING: KARA MCCARTHY
 SCALE: 1/8" = 1'-0" DATE: FEB. 25, 2024
2
 OF 3
HOUSE PLOT



- Key to Instrumentation**
- ETC Source 4 - 10° @ 750w
 - ETC Source 4 - 14° @ 750w
 - ETC Source 4 - 19° @ 750w
 - ETC Source 4 - 26° @ 750w
 - ETC Source 4 - 36° @ 750w
 - ETC Source 4 - 50° @ 750w
 - ETC Source 4 - 90° @ 750w
 - ETC ColorSource Deep Blue 36° 147w
 - ETC ColorSource Deep Blue 50° 147w
 - ETC Source 4 LED2 Lustr 26° 171w
 - ETC Source 4 LED2 Lustr 36° 171w
 - ETC Desire D60 LED 181w
 - COLORado 2 Quad Zoom 201w (Chauvet)
 - Blizzard Motif Metro 600w
 - Elation Smarty Hybrid
 - ROBE Robin MMX 1000w
 - Strand SL660 - LED Cyc Strip
 - PRACTICAL Chandelier
 - PRACTICAL Blivuseff Tiffany Style Stained Glass Orange Mushroom Lamp
 - PRACTICAL Glass Pumpkin Light
 - PRACTICAL Green Desk Lamp
 - PRACTICAL LightTheBox Retro Rustic Wall Scones
 - PRACTICAL Hanging Edison Light Bulb
 - PRACTICAL Firefly Magic - Twinkling Firefly Lights

- Typical Notation**
- Barndoor
 - Top Hat
 - Gobo Color
 - Template/Iris
 - Unit Number
 - 750 watt Designation
 - Channel Number
 - Dimmer Number
 - Universe/Address Number
 - Circuit Number



UVU School of THE ARTS
 UTAH VALLEY UNIVERSITY
 LIGHTING BY:

INTO THE WOODS
 SCOTT & KAREN SMITH CENTER
 THE NOORDA CENTER FOR PERFORMING ARTS, UTAH VALLEY UNIVERSITY
 DIRECTED BY: JENNIFER DELAC
 LIGHTING DESIGNER: RYAN FALLIS
 ASST. LIGHTING: KARA MCCARTHY
 SCALE: 1/2" = 1'-0" DATE: FEB. 23, 2024
 PLATE # **3**
 SIZE: 36" x 48"
FLOOR PLOT